

Luxury Gets a New Address. on a Sprawling Green Landscape.



Signatureglobal (India) Limited | CIN No.: U70100DL2000PLC104787

Regd. Off: 13th Floor, Dr. Gopal Das Bhawan, 28, Barakhamba Road, Connaught Place, New Delhi - 110001

Corp. Off.: Ground Floor, Tower A, Signature Towers, South City 1, Gurugram, HARYANA - 122002

www.signatureglobal.in

Disclaimer: Promoter urges every applicant to inspect the project site and shall not merely rely upon or to be influenced by any architectural impression, plan or sales brochure and, therefore, requested to make personal judgment prior to submitting an application for allotment. The Project is being developed in phases, hence, certain facilities/amenities etc, may be used by allottee of other phases. Unless otherwise stated, all the images, visuals, material and information contained herein are purely creative/artistic and may not be actual representations of any products and/or amenities. Further, the actual design may vary in the fit and finished form, from the one displayed above. Project details / specifications can also be accessed at the office of Haryana Real Estate Regulatory Authority website <https://haryanarera.gov.in/>. Journey time shown, if any, is based upon Google Maps, which may vary as per the traffic at a relevant point of time.

Rate mentioned does not include GST and other statutory charges, if applicable any. T & C Apply. "1 Sq. mt = 10.7639 sq. ft."

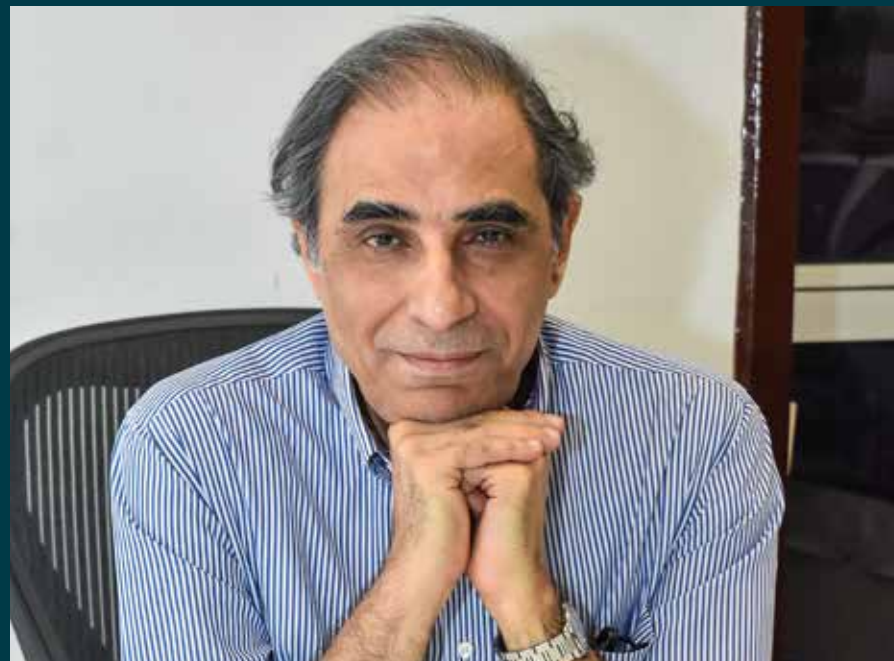




INDEPENDENT FLOORS FOR THE INDEPENDENT YOU

Start your Independent Innings at a place as unique as you, at Signature Global City 63A. One of the most respected leaders in realty, Signature Global offers you high-quality, luxury apartments at Golf Course Extension Road, spread across 5.0125 acres. Interior styling by the renowned interior designer Sonali Bhagwati, these apartments are envisioned to be the embodiment of perfection like a solitaire. Here, everything around you will motivate you to build that exclusive life you always dreamt of; to live on your own terms surrounded by world-class amenities and high-end security.





Designed by
Padma Bhushan
Architect
Hafeez Contractor



Sonali Bhagwati

"There are no shortcuts to hard work." That is the motto of Sonali Bhagwati, an eminent architect and interior designer for the last 30 years. An alumnus of the prestigious institute CEPT, Ahmedabad, she is the recipient of a scholarship from L'institute Francais D'architecture to train in Paris under architect Bernard Kohn.

Bhagwati's sources of inspiration and role models are her parents. The former chief justice of India and Padma Vibhushan winner, her father had always shown her the path to excellence through hard work and intellect. Her mother has inculcated the admirable qualities of focus, dedication and a positive attitude. Mr. B.V. Doshi, the Pritzker prize winner, has always been her mentor and guide in her architectural journey.

Her philosophy resonates with that of Signature Global. She is associated with Signature Global for interior styling to give you vibrant homes, providing a socially relevant environment. Her designs are visualized with a deep understanding of client needs and aspirations. She and her team specialise in analysing and capturing the ever-changing socio-economic trends of the market that impact architecture and the built environment. A testimony to this fact is her design for space modules, which aptly address the paradigm shift in workplace concepts.



It is an International standard certification that ensures your green home has definite advantages over traditional homes.

- Building with environment-friendly, non-toxic material.
- Construction designs that adapt with surrounding nature.
- Sustainable use of natural resources.
- Better indoor air-quality.
- Emphasis on renewable resources, like solar power.
- Recycling and reusing domestic byproducts, such as used water.
- Low maintenance costs resulting in better living conditions.

Features of Green Homes



Operational energy saving features



Natural ventilation



Optimum window to wall ratio (WWR)



Energy-Efficient walls



High thermal performance windows



Water saving features



Low flow water fixtures (taps, showerheads)



Low flow water closet



Waste water treatment & reuse



Embodied energy saving features



Low embodied energy materials (walls, floor & roof slab, flooring & window frames)



Reflective roof



Rain water harvesting

SIGNATURE GLOBAL CITY 63A

SECTOR 63A, GURUGRAM



LOCATION MAP

MAP SHOWN HERE IS BASED UPON
GOOGLE MAPS

CONNECTIVITY

- Well connected to Golf Course Road, Sohna Road, NH-8, Gurugram and Faridabad Road
- 1.5 KM from the proposed metro station
- 25 KM drive from Indira Gandhi International Airport
- 20 KM drive from Delhi
- 8 KM drive from HUDA City Centre metro station
- Close to Southern Peripheral Road
- Easy access to Delhi through Faridabad Road and MG Road
- The development of the much anticipated Delhi-Mumbai Industrial Corridor shall also help in fueling the already booming infrastructure of this area
- Multiple business hubs and Karpur CRPF Camp is in close proximity
- Cycling distance from Capital Cyberspace, Sector-59, Gurugram

CLOSE PROXIMITY TO SOME MODERN CONVENIENCES:

- St. Johannes International School
- VIBGYOR High School
- Shiksha Bharti Public School
- The Shriram Millennium School
- DPS International
- St. Xavier's High School
- Super-specialty hospitals (Medanta/Max/Fortis/Artemis/Paras)
- Multiplexes, shopping malls, hotels



Gift your Loved ones the Joy of
Signature Life, as Precious as Solitaire.



Drive in to the Solitaire of
Gurugram's Realty.



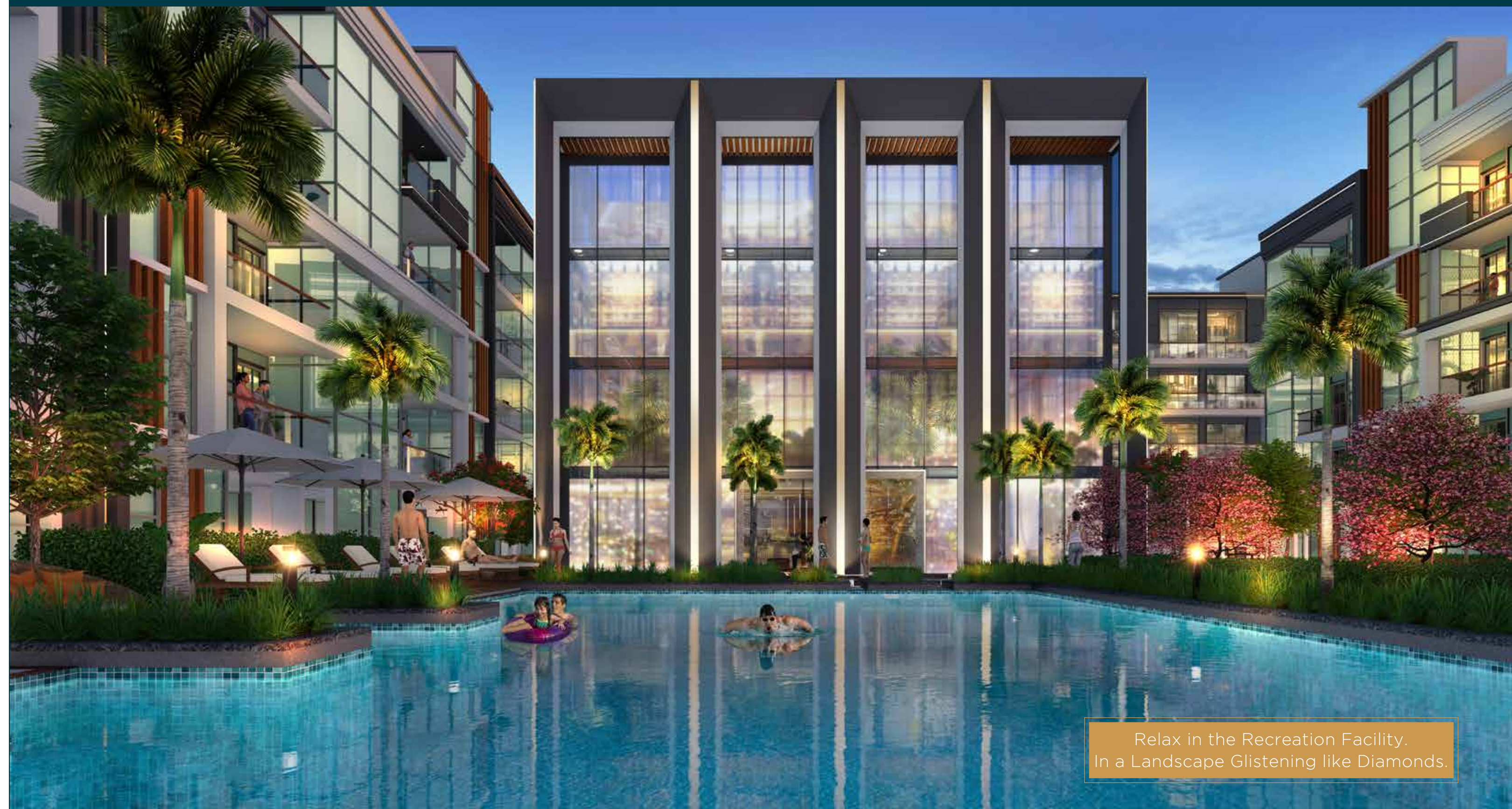
Get Your Designer Home.
At one-of-a-kind Landscape.



Add the Colour of Nature
to the Uniquely Luxurious Life.



Enjoy a New Wave of Living.
In a Sparkling Pool.



Relax in the Recreation Facility.
In a Landscape Glistening like Diamonds.



Enjoy the Perfect Blend of Luxury and Health; for a Holistic Living.



Take off on the Swings.
Create Special Memories.



A Place
Where Kids can Have all the Fun.



Celebrate the Beauty of Life,
in a Beautifully Sculpted Landscape.



A Place Dedicated
to all your Shopping Needs.



A Shopping Arcade
for an upscale experience.



There is something splendid
for everyone



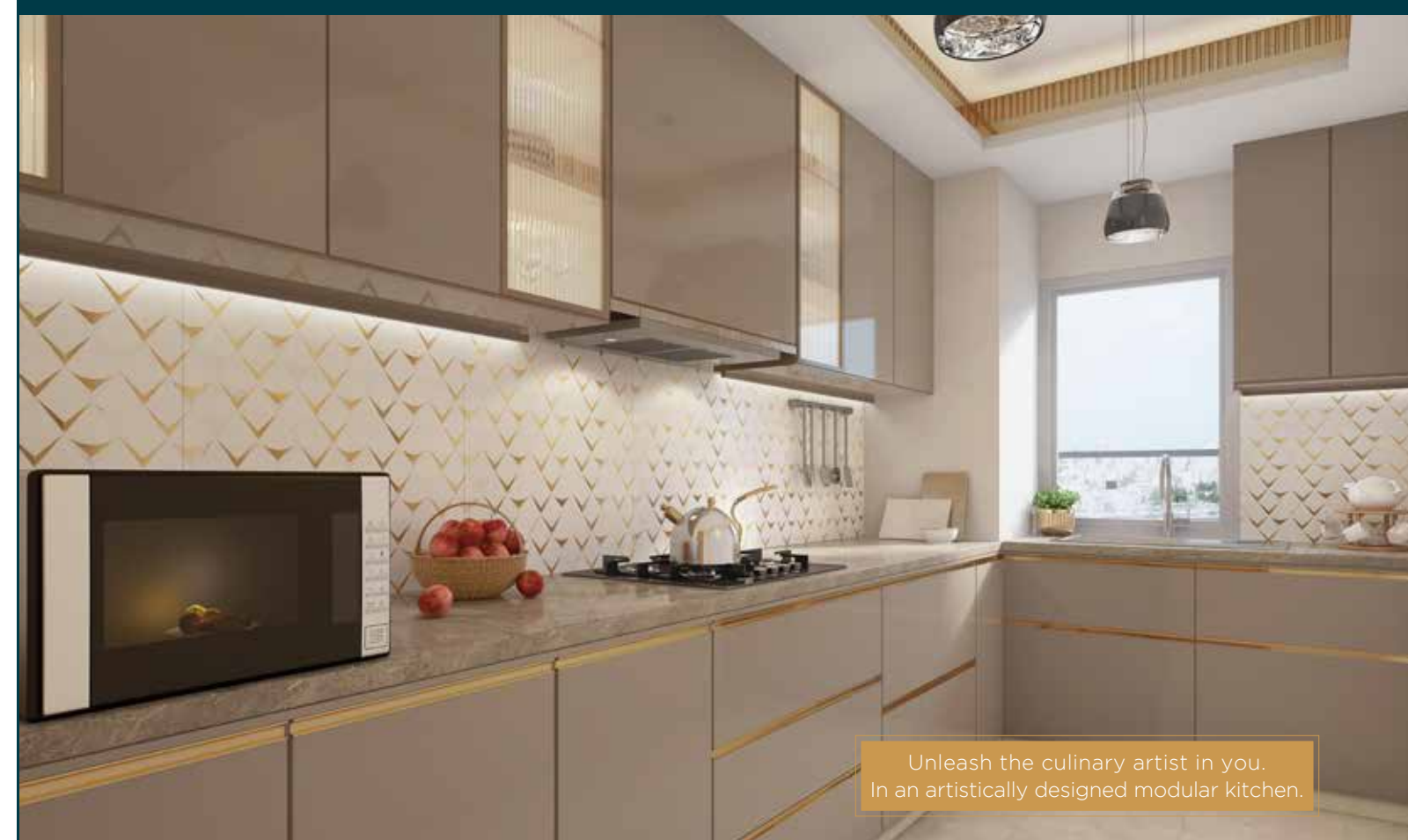
A Landscape for Shopping, Socializing,
Leisure and Relaxation.



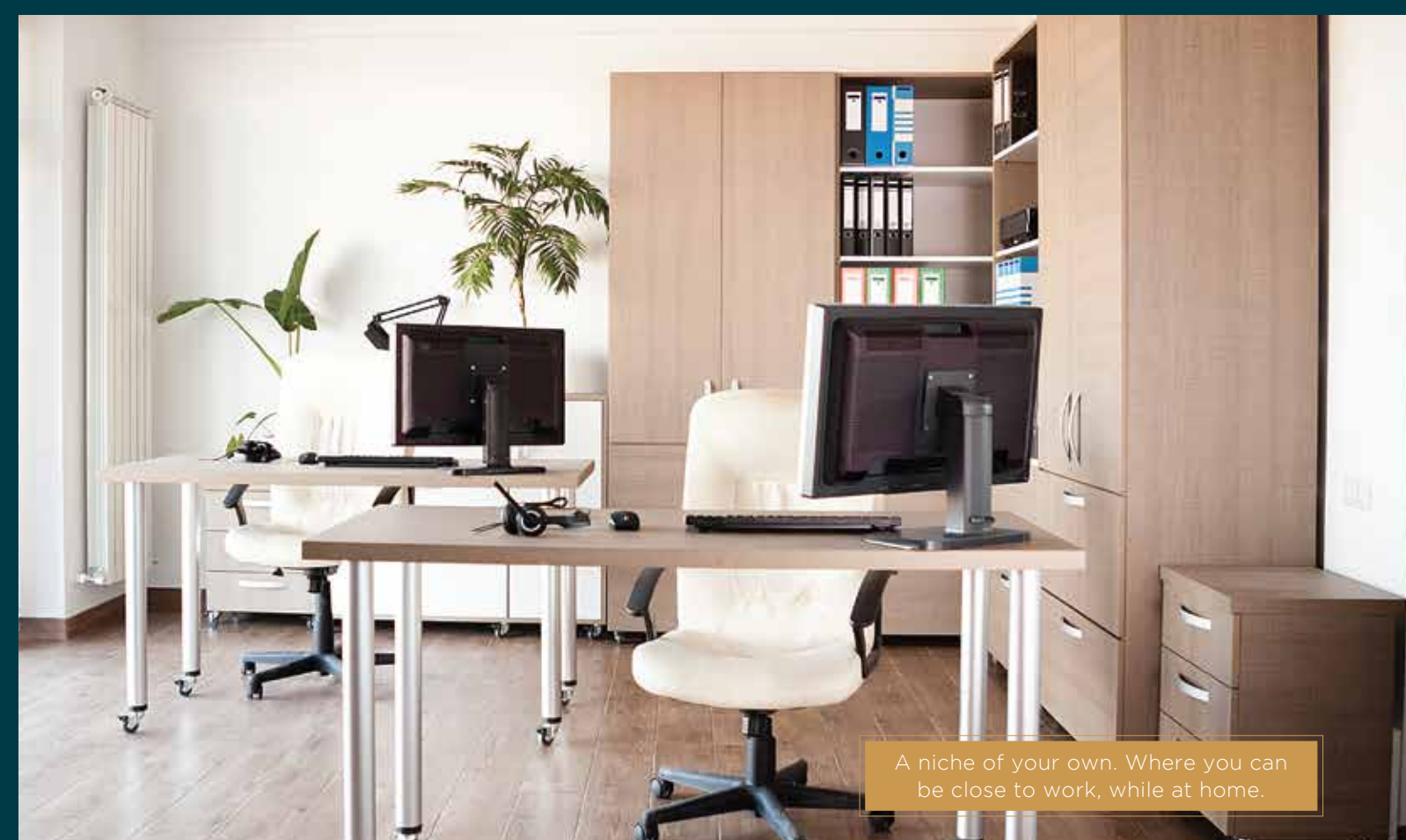
Welcome your guests
with style and elegance.



Making your inner sanctum the
ultimate style statement.

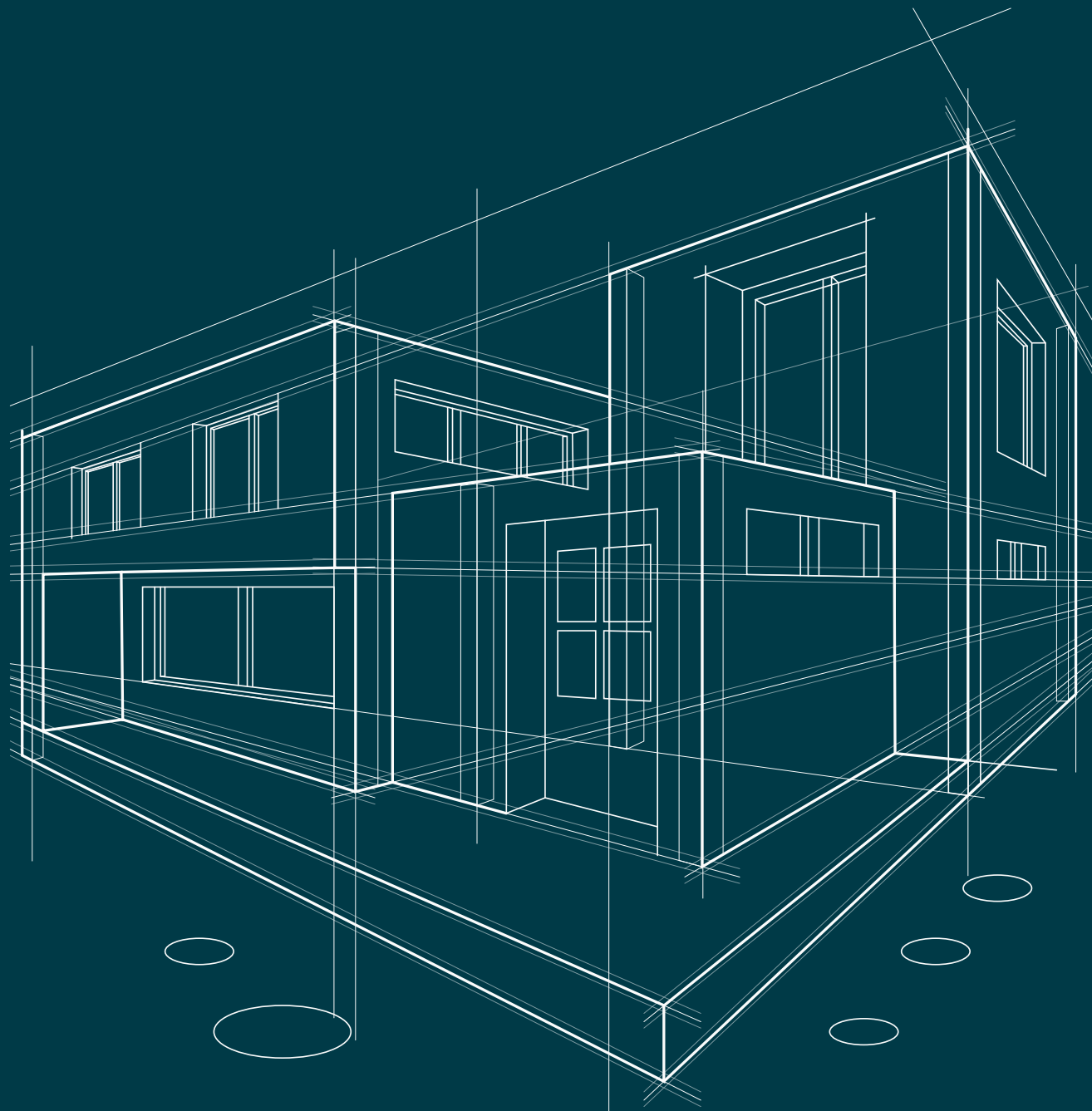


Unleash the culinary artist in you.
In an artistically designed modular kitchen.



A niche of your own. Where you can
be close to work, while at home.

SMART FEATURES OF A SMART HOME*



Secured Gated
Community with
Smart Visitor
Management
system.

Provision
for home
Automation**
& FTTH
(Fibre to
The Home)



Virtual
Concierge
App

*Some of the services mentioned will be available to our residents on chargeable basis.
** For Select services.



Wi-Fi
Enabled
Areas



Electric
Car
Charging
Stations



Video
Door
Phone



Digital
Door
Lock



Cyber
Lounge



Laundromat



HVAC
VRV



Modular
Kitchen



FINE DINING



VIRTUAL REALITY ZONE



TERRACE LOUNGE BAR



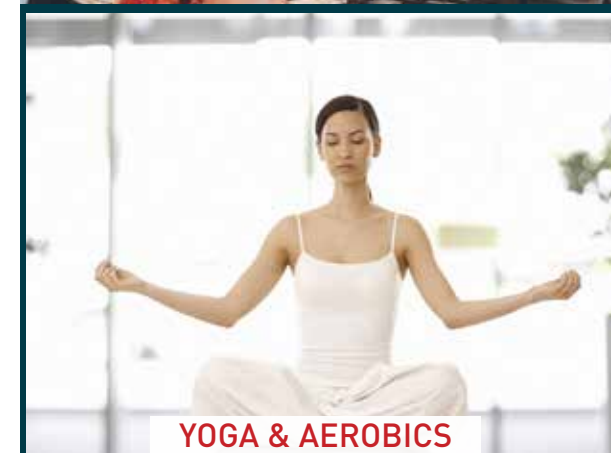
SALON



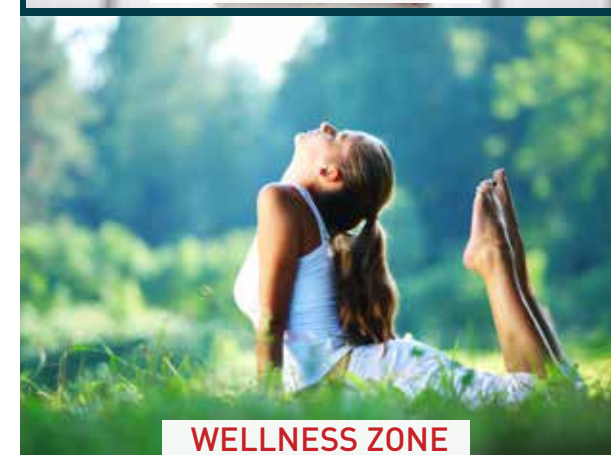
RESIDENT DOCTOR



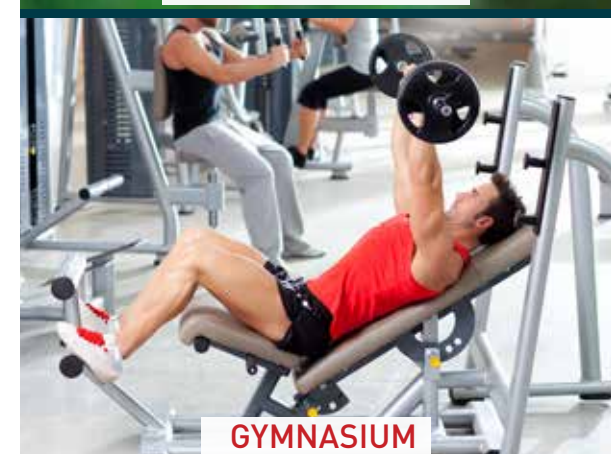
SPA



YOGA & AEROBICS



WELLNESS ZONE



GYMNASIUM



KID'S ZONE



INDOOR GAMES



MULTI PURPOSE HALL



E-LIBRARY



MEETING ROOM



GREAT AMENITIES FOR **GREATER EXPERIENCES**

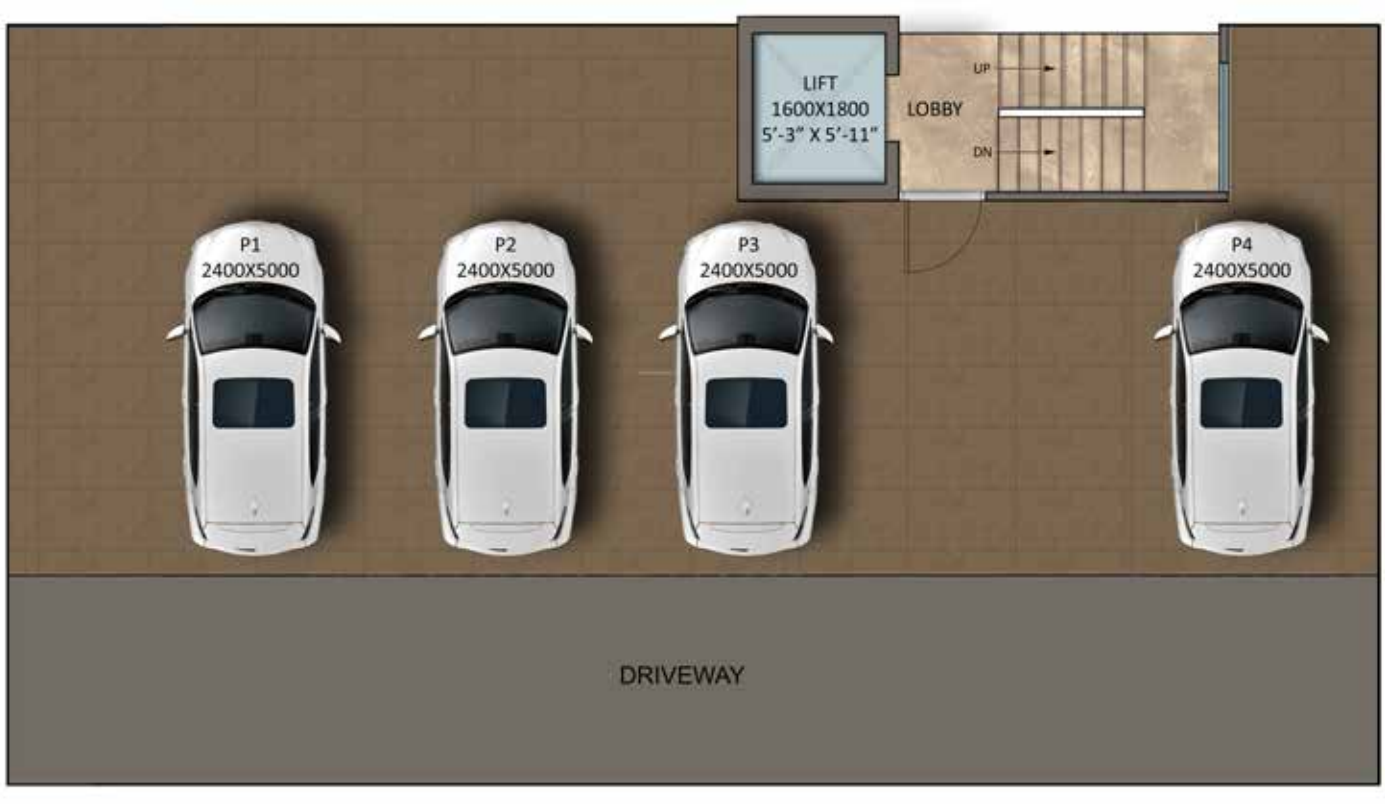


RECREATIONAL AREA



WORK SPACE

TYPE A
3BHK + 3 TOILET + POOJA ROOM



STILT FLOOR PLAN

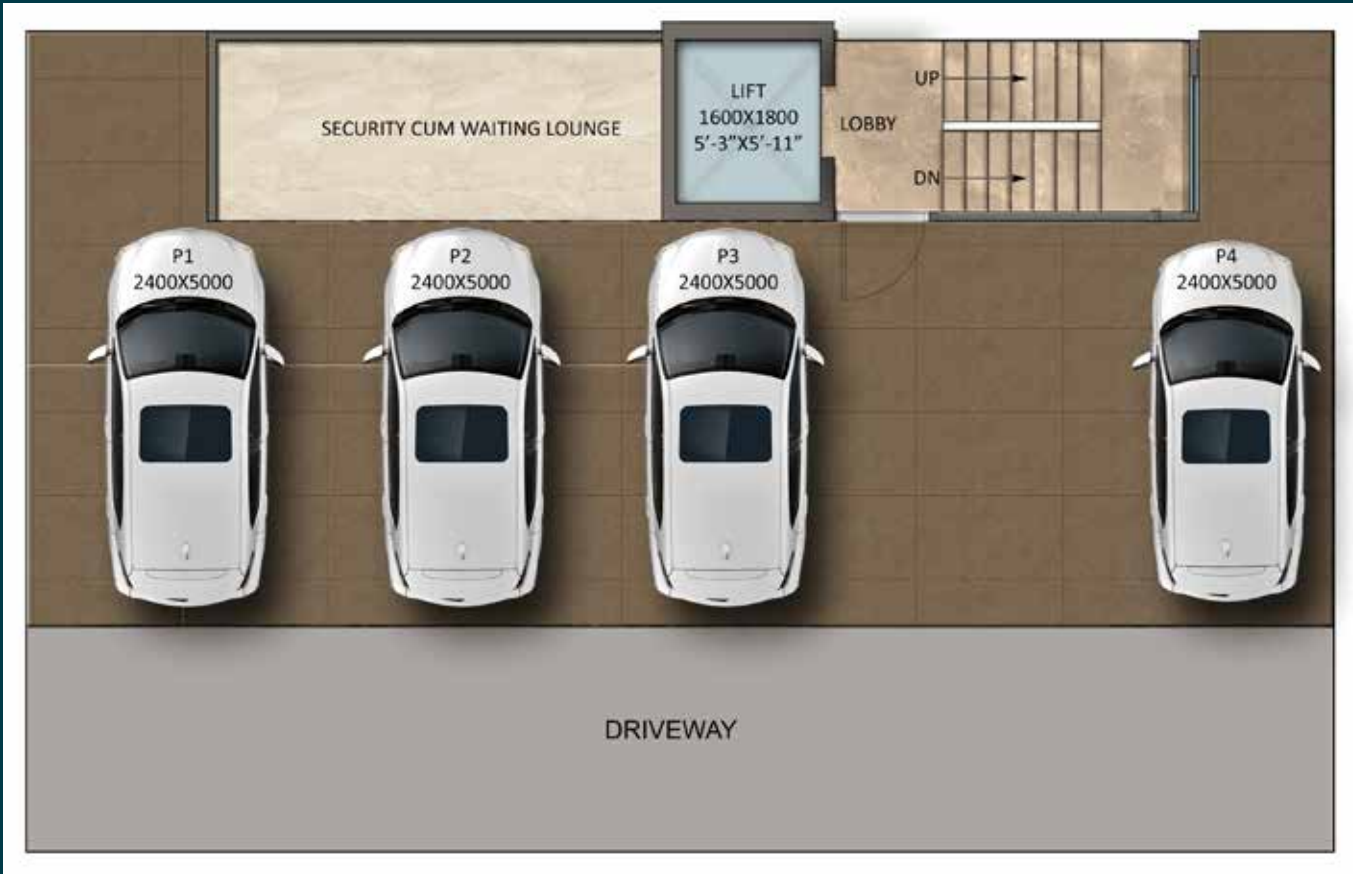
BASEMENT PLAN



TERRACE FLOOR PLAN

1ST TO 4TH FLOOR PLAN

TYPE B
3BHK + 3 TOILET



STILT FLOOR PLAN



TERRACE FLOOR PLAN

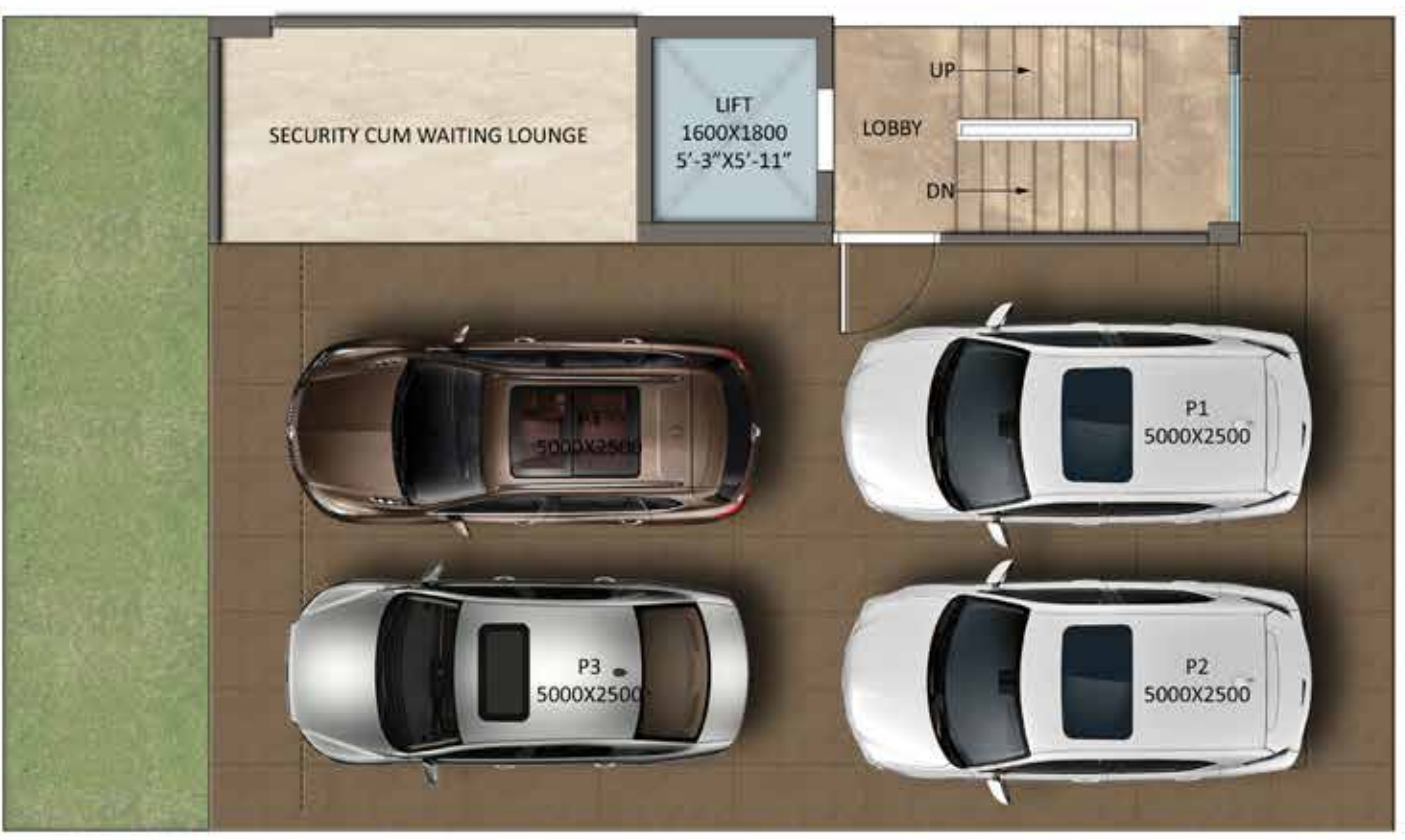


BASEMENT PLAN



1ST TO 4TH FLOOR PLAN

TYPE C
2BHK + 2 TOILET



STILT FLOOR PLAN



TERRACE FLOOR PLAN



BASEMENT PLAN



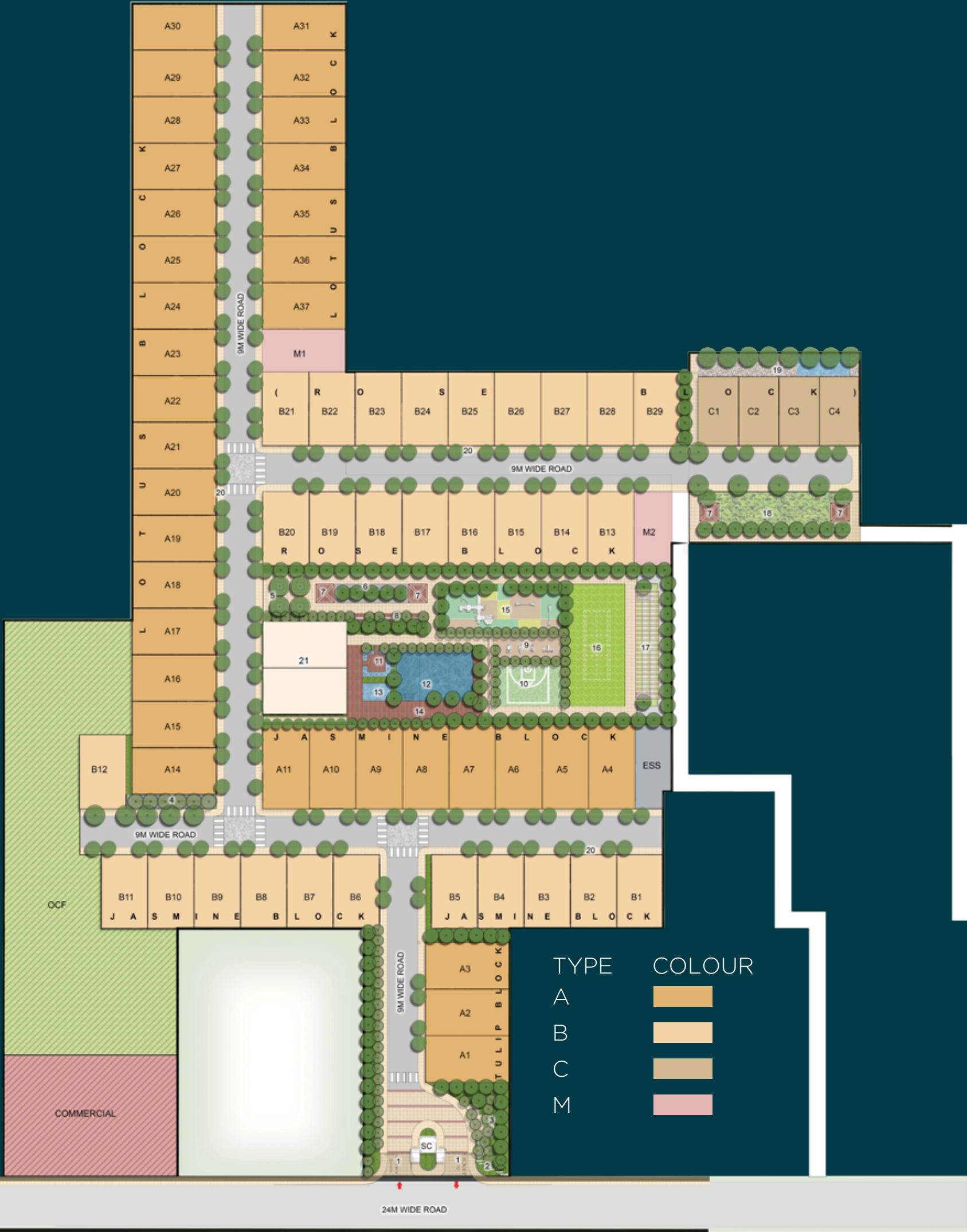
1ST TO 4TH FLOOR PLAN

SITE PLAN



AMENITIES

- 1. ENTRY/ EXIT PORTAL
- 2. BRANDING WALL
- 3. BUS/ TAXI DROPOFF AREA
- 4. REFLEXOLOGY GARDEN
- 5. TREE COURT
- 6. SENIOR CITIZEN AREA
- 7. GAZEBO
- 8. SEATING PLAZA
- 9. OPEN GYM
- 10. BASKETBALL PLAY COURT
- 11. DECK WITH BUBBLERS
- 12. SWIMMING POOL
- 13. KIDS POOL
- 14. POOLSIDE DECK
- 15. KIDS PLAY AREA
- 16. MULTI PLAY LAWN
- 17. AMPHITHEATER WITH PERGOLA
- 18. FRAGRANCE / BUTTERFLY GARDEN
- 19. PETS PARK / SPLASH POOL
- 20. 1.75 M WIDE PATHWAY
- 21. RECREATION AREA



| Sr. No. | BLOCK TYPE | BLOCK NO. | PLOT TYPE | PLOT NO. | UN-FROZEN |
|---------|-------------------|-----------|-----------|----------|-----------|
| 1 | TULIP | A1 | A | A1 | UN-FROZEN |
| 2 | TULIP | A2 | A | A2 | UN-FROZEN |
| 3 | TULIP | A3 | A | A3 | UN-FROZEN |
| 4 | JASMINE | B1 | B | B1 | UN-FROZEN |
| 5 | JASMINE | B2 | B | B2 | UN-FROZEN |
| 6 | JASMINE | B3 | B | B3 | UN-FROZEN |
| 7 | JASMINE | B4 | B | B4 | UN-FROZEN |
| 8 | JASMINE | B5 | B | B5 | UN-FROZEN |
| 9 | JASMINE | B6 | B | B6 | UN-FROZEN |
| 10 | JASMINE | B7 | B | B7 | UN-FROZEN |
| 11 | JASMINE | B8 | B | B8 | UN-FROZEN |
| 12 | JASMINE | B9 | B | B9 | UN-FROZEN |
| 13 | JASMINE | B10 | B | B10 | UN-FROZEN |
| 14 | JASMINE | B11 | B | B11 | UN-FROZEN |
| 15 | JASMINE | B12 | B | B12 | UN-FROZEN |
| 16 | JASMINE | A4 | A | A4 | UN-FROZEN |
| 17 | JASMINE | A5 | A | A5 | UN-FROZEN |
| 18 | JASMINE | A6 | A | A6 | UN-FROZEN |
| 19 | JASMINE | A7 | A | A7 | UN-FROZEN |
| 20 | JASMINE | A8 | A | A8 | UN-FROZEN |
| 21 | JASMINE | A9 | A | A9 | UN-FROZEN |
| 22 | JASMINE | A10 | A | A10 | UN-FROZEN |
| 23 | JASMINE | A11 | A | A11 | UN-FROZEN |
| 24 | RECREATIONAL AREA | A12 | A | A12 | UN-FROZEN |
| 25 | RECREATIONAL AREA | A13 | A | A13 | UN-FROZEN |
| 26 | LOTUS | A14 | A | A14 | UN-FROZEN |
| 27 | LOTUS | A15 | A | A15 | UN-FROZEN |
| 28 | LOTUS | A16 | A | A16 | UN-FROZEN |
| 29 | LOTUS | A17 | A | A17 | UN-FROZEN |
| 30 | LOTUS | A18 | A | A18 | UN-FROZEN |
| 31 | LOTUS | A19 | A | A19 | UN-FROZEN |
| 32 | LOTUS | A20 | A | A20 | UN-FROZEN |
| 33 | LOTUS | A21 | A | A21 | UN-FROZEN |
| 34 | LOTUS | A22 | A | A22 | UN-FROZEN |
| 35 | LOTUS | A23 | A | A23 | UN-FROZEN |
| 36 | LOTUS | A24 | A | A24 | UN-FROZEN |

BLOCK NUMBERING PLAN

| Sr. No. | BLOCK TYPE | BLOCK NO. | PLOT TYPE | PLOT NO. | UN-FROZEN |
|---------|------------|-----------|-----------|----------|-----------|
| 37 | LOTUS | A25 | A | A25 | UN-FROZEN |
| 38 | LOTUS | A26 | A | A26 | UN-FROZEN |
| 39 | LOTUS | A27 | A | A27 | UN-FROZEN |
| 40 | LOTUS | A28 | A | A28 | UN-FROZEN |
| 41 | LOTUS | A29 | A | A29 | UN-FROZEN |
| 42 | LOTUS | A30 | A | A30 | UN-FROZEN |
| 43 | LOTUS | A31 | A | A31 | UN-FROZEN |
| 44 | LOTUS | A32 | A | A32 | UN-FROZEN |
| 45 | LOTUS | A33 | A | A33 | UN-FROZEN |
| 46 | LOTUS | A34 | A | A34 | UN-FROZEN |
| 47 | LOTUS | A35 | A | A35 | UN-FROZEN |
| 48 | LOTUS | A36 | A | A36 | UN-FROZEN |
| 49 | LOTUS | A37 | A | A37 | UN-FROZEN |
| 50 | LOTUS | M1 | M | M1 | UN-FROZEN |
| 51 | ROSE | M2 | M | M2 | UN-FROZEN |
| 52 | ROSE | B13 | B | B13 | UN-FROZEN |
| 53 | ROSE | B14 | B | B14 | UN-FROZEN |
| 54 | ROSE | B15 | B | B15 | UN-FROZEN |
| 55 | ROSE | B16 | B | B16 | UN-FROZEN |
| 56 | ROSE | B17 | B | B17 | UN-FROZEN |
| 57 | ROSE | B18 | B | B18 | UN-FROZEN |
| 58 | ROSE | B19 | B | B19 | UN-FROZEN |
| 59 | ROSE | B20 | B | B20 | UN-FROZEN |
| 60 | ROSE | B21 | B | B21 | UN-FROZEN |
| 61 | ROSE | B22 | B | B22 | UN-FROZEN |
| 62 | ROSE | B23 | B | B23 | UN-FROZEN |
| 63 | ROSE | B24 | B | B24 | UN-FROZEN |
| 64 | ROSE | B25 | B | B25 | UN-FROZEN |
| 65 | ROSE | B26 | B | B26 | UN-FROZEN |
| 66 | ROSE | B27 | B | B27 | UN-FROZEN |
| 67 | ROSE | B28 | B | B28 | UN-FROZEN |
| 68 | ROSE | B29 | B | B29 | UN-FROZEN |
| 69 | ROSE | C1 | C | C1 | UN-FROZEN |
| 70 | ROSE | C2 | C | C2 | UN-FROZEN |
| 71 | ROSE | C3 | C | C3 | UN-FROZEN |
| 72 | ROSE | C4 | C | C4 | UN-FROZEN |

BLOCK NUMBERING PLAN

SPECIFICATIONS

DRAWING / DINING ROOM



FLOOR
MARBLE FLOORING



CEILING
ACRYLIC EMULSION PAINT/
OIL BOUND DISTEMPER



WALL
ACRYLIC EMULSION

BEDROOM



FLOOR
LAMINATED WOODEN
FLOOR



CEILING
ACRYLIC EMULSION PAINT/
OIL BOUND DISTEMPER



WALL
ACRYLIC EMULSION

KITCHEN



FLOOR
VITRIFIED /
CERAMIC TILES



WALL / CEILING
ACRYLIC EMULSION PAINT/
OIL BOUND DISTEMPER



DADO
CERAMIC TILES 600 MM
ABOVE THE COUNTER



COUNTER TOP
GRANITE STONE



FITTINGS & FIXTURES
ISI MARKED CP FITTINGS
& SS SINK

TOILET & BATH



FLOOR
ANTI-SKID
CERAMIC TILES



WALL
CERAMIC TILES TILL
4 FEET / 7'-0" FEET



CEILING
GRID FALSE CEILING



FITTINGS & FIXTURES ISI MARKED
CP FITTINGS, WC & WASHBASIN

Note : Flooring in mix design of marble, granite and tile. Accordingly, variations in shade and/ or size and/or colour and/or design of the tiles, motifs, mica etc. may occur.

BALCONIES



FLOOR
ANTI-SKID / MATT
FINISH CERAMIC TILES



RAILING
GLASS RAILING

TERRACE



BRICKBAT COBA OR
WATER PROOFING TREATMENT

DOORS & WINDOWS



MAIN / INTERNAL
DOOR FRAME
HARD WOOD / RED MERANTI



INTERNAL DOOR SHUTTERS
BOTH SIDE LAMINATED DOORS



EXTERNAL DOORS & WINDOWS
UPVC/ALUMINIUM POWDER
COATED

ELECTRICAL

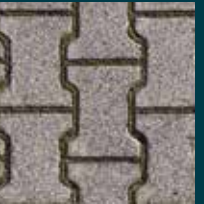


WIRING
COPPER ELECTRICAL WIRING
THROUGHOUT IN CONCEALED
CONDUIT FOR LIGHT POINTS



SWITCHES / SOCKET
ISI MARKED SWITCHES
& SOCKETS

EXTERNAL DEVELOPMENT



INTERNAL ROADS
INTERLOCKING BLOCKS/
TREMIX CONCRETE ROAD



BOUNDARY WALL
RCC / BRICK WALL
WITH PLASTER &
EXTERNAL WEATHER
PROOF PAINT FINISH



EXTERNAL PAINT
WEATHER PROOF TEXTURE
PAINT IN BUILDINGS

STRUCTURE



EARTHQUAKE RESISTANT
RCC FRAMED STRUCTURE
AS PER SEISMIC ZONE

BEST BRANDS FOR THE BEST EXPERIENCE

TILES

Kajaria

VARMORA

orientbell

SWITCHES

legrand

OSUM

wipro

NORTH-WEST

PAINTS

asianpaints

Dulux

Berger

WOODEN DOORS

Bhutan tuff

rama ply

KITCHEN SINK

Jayna

CARYSIL

DOOR LOCKS & HANDLES

Dorsët

OZONE

Goodrej

WIRES & CABLES

Finolex

HAVELLS

POLYCAB

GLASS

SAINT-GOBAIN

AIS

Asahi India Glass Ltd.

ALUMINIUM DOORS & WINDOW PROFILES

SCHÜCO

TECHNAL

CP BATH FITTINGS

Jaquar

KOHLER

LIFTS

OTIS

KONE

Schindler

LIGHTING

wipro

OSRAM

PHILIPS

CHIMNEY AND HOB

elica

FABER

HVAC VRV

DAIKIN

VOLTAS

SANITARY FITTINGS

Jaquar

KOHLER

hindware

All products, names, logos, brands, trademarks are properties of their respective owners. Product of other companies may also be used. However, priority will be given to the aforesaid brands/companies.

ABOUT SIGNATURE GLOBAL

We, at Signature Global, believe in the policy of transparency. Though we have created our own distinct identity in the field of real estate, we are working more passionately to maintain and improve our reach in the sector. We emphasize on the core values of reliability, responsibility and global standards with regard to the International Real Estate realm.

The group has outlined its vision for 'India of Tomorrow' with a mission of 'Har Parivar ek Ghar' (a home for every family). With a vision to redefine the current conventions of Indian real estate development by championing excellence in craftsman, planning and service, the company has successfully launched affordable housing projects; all in the prime locations including Gurugram, Sohna and Karnal in Haryana and commercial malls focussing on the interest of customers in Vaishali, Ghaziabad, Uttar Pradesh and Sohna, South of Gurugram. The company has successfully delivered Signature Global Solera, Synera, Andour Heights, Grand IVA, Orchard Avenue, Solera 2, The Serenas, Roselia 2 and Signature Global Park 2&3* in Gurugram and offered possession of Signature Global Sunrise in Karnal months before the expected time of delivery.

Each residential project is complimented with one branded retail hub christened as Signum. The hallmark of these projects are ideal location, impeccable quality of construction with excellent amenities at reasonable prices. They are unique in terms of planning, design, quality, workmanship, transparency, customer delight and service. We have ushered in best global practices of transparency and professionalism, with 'think global, act local' approach, doing product development as per the needs of our valued consumers. We have introduced highly advanced global green building certification IGBC, which provides a solution to capitalize on the value of green buildings by promoting benefits to customers while protecting environment.

We are deploying cutting edge technology and best project management techniques to achieve scale and efficiency to boost affordability. Signature Global works with a team of experienced architects, master planners and designers who are among the best in the industry. We had partnered with several leading National and International institutions like IFC (a sister organization of the World Bank and a member of the World Bank Group), HDFC CAPITAL, ICICI Prudential etc. and takes pride in growing its reach to customers by seeking direct online applications.

Leading a team of highly enthusiastic professionals is always an enjoyable task. The same becomes even more motivating when the society starts recognizing and rewarding your efforts. In the last couple of years, we have won several awards from prestigious media houses for our outstanding contribution to the real estate.

- 'Haryana's Icons' and 'Emerging Developer' by Times of India.
- 'Business Leaders in Affordable Housing' by ASSOCHAM.

- Best LIG Housing Project' for Solera by PMAY Empowering India, 2019.
 - 'Electronic Media Campaign of the Year' and 'Sustainable Business Leader of the Year' by Realty Plus, 2019.
 - 'Affordable Housing Project of the Year' for Synera at 12th 'Realty+ Awards
 - 'Developer of the Year', Residential and Digital Media Campaign of the Year' in 2020 at 12th 'Realty+ Awards
 - 'The Developer of Affordable Housing of the Year Award' by ASSOCHAM at 'Realty and Sustainability Confluence and Awards', 2020.
 - 13th Annual Estate Awards 2021, Affordable Housing Property of the Year - (National) Golf Greens-79
 - 13th Annual Estate Awards 2021, Best Affordable / Budget Housing Developer of the Year - Residential (National)
 - 'Developer of the Year - Residential at the 13th 'Realty+ Excellence Awards', 2021, NORTH.
 - 'The Business Leadership Awards', 2021, under 'Brand Excellence in Real Estate and Construction' category.
 - 'Excellence in Indian Real Estate' award at 'UDAAN - Dare to Dream' by Zee Hindustan.
 - 'Sustainable Business Leader of the Year' to Mr. Pradeep Aggarwal at the 13th 'Realty+ Excellence Awards', 2021, NORTH.
 - 'Affordable Housing Project of the Year' to Grand IVA and 'Project Launch of the Year' to Signature Global City 37D at the 13th 'Realty+ Excellence Awards', 2021, NORTH.
 - 'The 8th IGBC Green Championship Awards' under the category of 'Developer Leading the Green Affordable Housing Movement in India'.
 - India's Most Sustainable Companies Published in the 2nd edition of BW BusinessWorld in association with Sustain Labs Paris
 - Real Estate - Affordable Housing Developer of the year by Times Business Awards North 2022
- Recently, we have been honoured by Directorate of Town and Country Planning (DTCP) and Haryana Real Estate Regulatory Authority (HARERA), Panchkula and Gurugram, with the following awards:
- Falicitated for delivery of affordable housing Project within a three-year period, after obtaining occupancy certificate; Presented by Sh. Manohar Lal Khattar, Hon'ble Chief Minister of Haryana.
 - Falicitated for completion of Ddjay project within a record time frame of less than one and a half years; Presented by Sh. Manohar Lal Khattar, Hon'ble Chief Minister of Haryana.
 - Mr. Pradeep Aggarwal awarded as Real Estate Person of the Year and Signature Global as Real Estate Company of the Year by Construction Week India Awards 2022.

We have also got ISO 9001:2015; 14001:2015; 45001:2018 Certification. We are indeed proud of our achievements and thankful to our highly enthusiastic professionals for their immense support.

*Started giving possession of Phase 1

